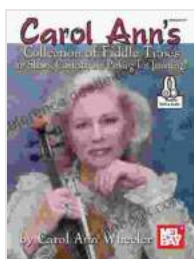


The Ultimate Guide to Finding Parking for Shows, Contests, and Special Events

Whether you're attending a concert, sporting event, or festival, finding parking can be a nightmare. But it doesn't have to be! In this guide, we'll share our top tips for finding parking for shows, contests, and special events so you can avoid the stress and get to the fun faster.

1. Do your research

The first step to finding parking for a show, contest, or special event is to do your research. This means finding out where the event is taking place and what parking options are available.



Carol Ann's Collection of Fiddle Tunes: for Shows, Contests and Parking Lots! by Jake Shimabukuro

★★★★★ 5 out of 5
Language : English
File size : 33088 KB
Print length : 112 pages
Screen Reader: Supported
Paperback : 64 pages
Item Weight : 7.8 ounces
Dimensions : 8.5 x 0.16 x 11 inches



Here are a few things to consider:

- **The location of the event.** Is the event taking place in a downtown area, a suburban area, or a rural area? The location of the event will

affect the availability of parking.

- **The size of the event.** A large event will likely require more parking than a small event. It's important to estimate the size of the event so you can plan accordingly.
- **The time of the event.** If the event is taking place during peak hours, it may be more difficult to find parking. Try to arrive early or late to avoid the crowds.

2. Check online resources

Once you've done your research, it's time to start looking for parking options. There are a number of online resources that can help you find parking for shows, contests, and special events.

Here are a few of our favorites:

- **SpotHero.** SpotHero is a website and app that allows you to book parking in advance. This can be a great option if you're attending a large event and you want to guarantee a parking spot.
- **ParkMe.** ParkMe is another website and app that allows you to find parking. ParkMe provides real-time information on parking availability and prices.
- **Google Maps.** Google Maps can also be used to find parking. Simply enter the address of the event into Google Maps and then click on the "Parking" tab.

3. Explore public transportation

If you're unable to find parking, or if you simply don't want to deal with the hassle of driving, you can always explore public transportation options.

Here are a few things to consider:

- **The location of the event.** Is the event taking place near a public transportation station? If so, you may be able to take a bus or train to the event.
- **The time of the event.** If the event is taking place during peak hours, public transportation may be more crowded than usual. Try to arrive early or late to avoid the crowds.
- **The cost of public transportation.** Public transportation can be a more affordable option than parking, but it's important to factor in the cost of fares.

4. Consider ride-sharing

Ride-sharing is another great option for getting to and from shows, contests, and special events.

Here are a few things to consider:

- **The availability of ride-sharing services.** Ride-sharing services are not available in all areas. Check to see if ride-sharing services are available in the area where the event is taking place.
- **The cost of ride-sharing.** Ride-sharing can be a more affordable option than parking, but it's important to factor in the cost of the ride.
- **The safety of ride-sharing.** Ride-sharing is generally safe, but it's important to be aware of the risks involved. Always make sure to share

your ride with a friend or family member.

5. Be prepared to walk

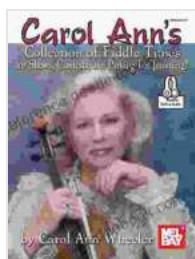
If all else fails, you may have to be prepared to walk to the event.

Here are a few things to consider:

- **The distance to the event.** If the event is within walking distance, you may be able to walk to the event instead of driving or taking public transportation.
- **The weather.** If the weather is bad, you may want to avoid walking to the event. Consider taking public transportation or ride-sharing instead.
- **Your fitness level.** If you're not in good physical condition, you may want to avoid walking to the event. Consider taking public transportation or ride-sharing instead.

Finding parking for shows, contests, and special events can be a challenge, but it doesn't have to be impossible. By following these tips, you can find parking and get to the event on time without any hassle.

So what are you waiting for? Start planning your next event today!



Carol Ann's Collection of Fiddle Tunes: for Shows, Contests and Parking Lots! by Jake Shimabukuro

★★★★★ 5 out of 5

Language : English

File size : 33088 KB

Print length : 112 pages

Screen Reader: Supported

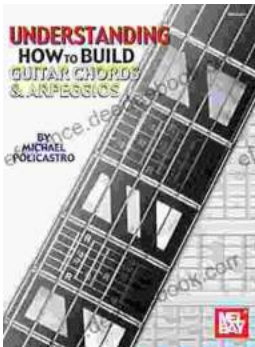
Paperback : 64 pages

Item Weight : 7.8 ounces

Dimensions : 8.5 x 0.16 x 11 inches

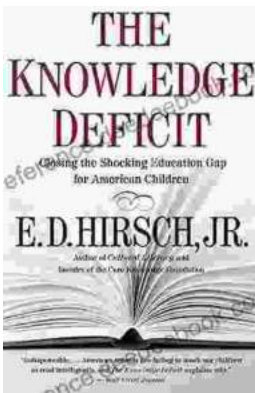
FREE

DOWNLOAD E-BOOK



Understanding How to Build Guitar Chords and Arpeggios: A Comprehensive Guide for Guitarists

Mastering guitar chords and arpeggios is a fundamental aspect of guitar playing that opens up a world of musical possibilities. These techniques provide the backbone for...



Closing the Shocking Education Gap for American Children: A Comprehensive Guide to Addressing Educational Inequalities and Ensuring Equitable Outcomes for All Students

Education is the foundation upon which a successful and just society is built. It empowers individuals with the knowledge, skills, and critical thinking...